



EVOMETRIX

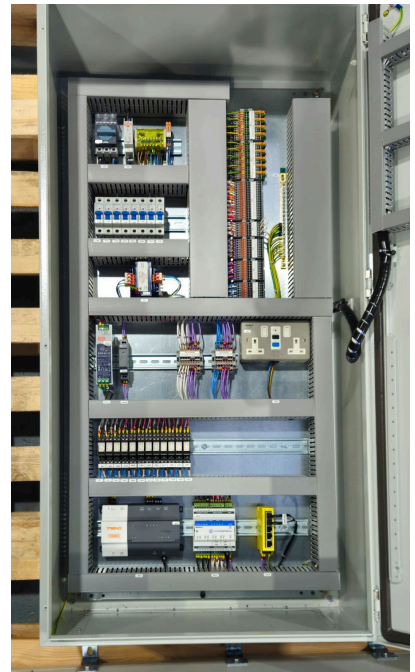
by

G&G Controls
The Panel People

Evometrix C018

Included Features:

- Double RCD socket
- Wago disconnect terminals
- Top entry
- Panel light
- Schneider mild steel enclosure
- 25A Socomec isolator
- Relay protected DIs and DOs
- Surge protection
- Inputs/Outputs
 - 5 x digital inputs, up to 3 hardwired interlock
 - 4 x digital outputs
 - 5 x universal inputs
 - 4 x analogue outputs
- ISMA MIX-18-IP (www.ismacontrolli.com/en/amfile/file/download/file/1048/product/2217/)
- Brainbox 5 port network switch
- Custom lamps, switches and labelling as per project requirements.
- 10V DC available for 100% analogue signal to 0-10V DC equipment
- Removable door (all door wiring is run from dedicated terminals)
- Lamp test button



Input Voltage	230V AC
Control circuit	24V AC, with 24V DC for controller
Enclosure material	Powder coated mild steel
Warranty	12 months
Dimensions	1200H, 600W, 300D
Degree of protection	IP65, indoor use
Capacity	Minimum 50% trunking capacity, minimum 20% DIN rail capacity.

